

**TANK  
CONNECTION**  
AFFILIATE GROUP

# TANK CONNECTION

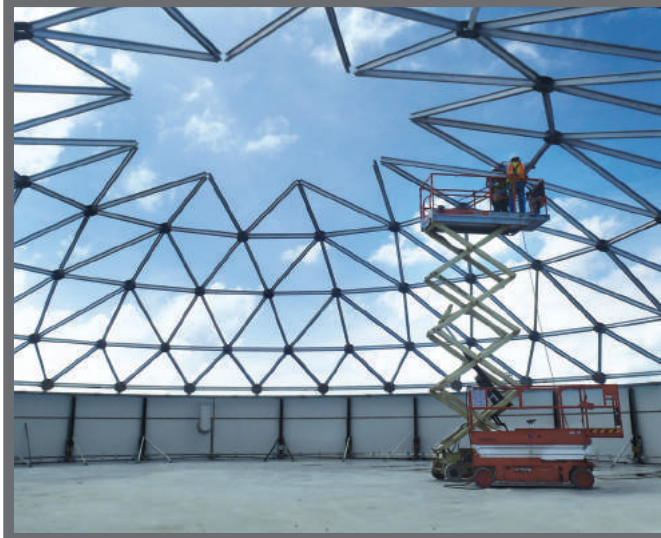
## Aluminum Domes by Tank Connection!

Only the EXPERTS in STORAGE CONTAINMENT, Tank Connection Affiliate Group, could bring you aluminum geodesic domes that are designed, manufactured and constructed better than competitor products.

[www.aluminumdomes.com](http://www.aluminumdomes.com)

## ABOUT TANK CONNECTION

TCAG is an integrated family of companies that specialize in liquid and dry bulk storage applications worldwide. Our storage products and field services not only command the highest quality ratings in the industry, but our process operations are vertically integrated, which promotes our global position as a competitive price leader. Starting with material procurement at the mill and finishing with construction services in the field, all value-added design, manufacturing, project management, system integration and field installation services are performed by TC personnel.



### AluminumDomes.com Advantage

- ⊗ All aluminum construction
- ⊗ Corrosion resistant
- ⊗ Maintenance free
- ⊗ TCAG engineering excellence
- ⊗ Strongest space frame design
- ⊗ Clear span design
- ⊗ Installation by TCAG
- ⊗ Water tight construction
- ⊗ Reduced vapor losses on internal and external floaters
- ⊗ Quick field installation
- ⊗ Extended service life
- ⊗ Standard warranty 2 years
- ⊗ Optimum cost efficiency
- ⊗ Superior aesthetics
- ⊗ Superior performance

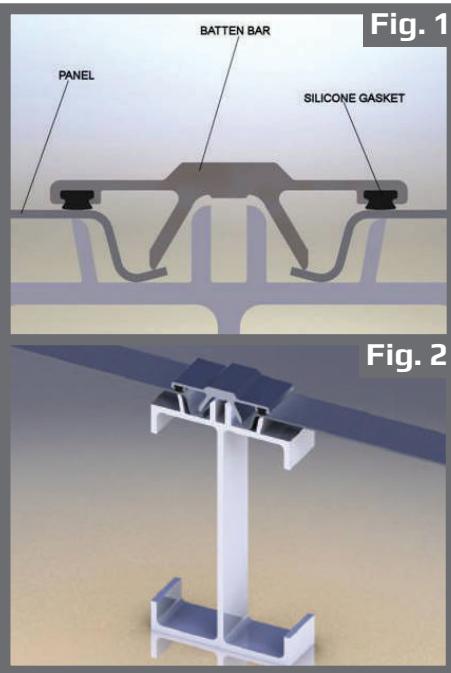
### What Makes the BEST Aluminum Geodesic Dome Design?

- ⊗ Proprietary design software, automated drawings and download files for manufacturing.
- ⊗ Proprietary extrusions, struts, batten bars and node cover designs.
- ⊗ The latest state-of-the-art dome fabrication equipment.
- ⊗ All aluminum construction that is corrosion resistant and virtually maintenance free.
- ⊗ Unmatched product quality that is backed by the best warranty in the industry.
- ⊗ A dome cover that provides superior field performance and superior aesthetics.
- ⊗ Available for expedited shipments worldwide.

At TC aluminum domes, we offer precision quality, premier design, innovation in application and unmatched field installation services. Constructed entirely of aluminum utilizing our proprietary component fabrication, our domes are corrosion resistant, maintenance free and designed for extended service life.

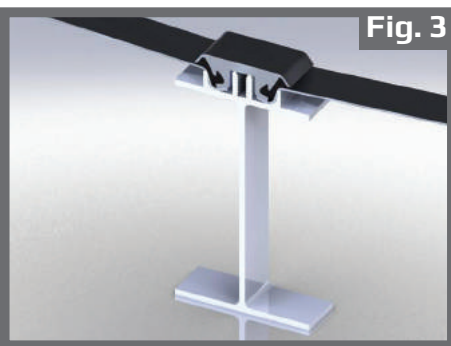


## Batten Bar, Panel and Beam Section Details



**Fig. 1 and 2: AluminumDomes.com Detail**

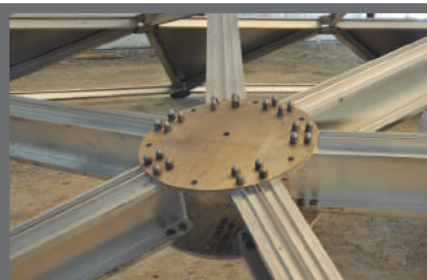
At TC aluminum domes, our beam design uses flange stiffeners for maximum beam strength. The batten bar attachment slot does not attempt to pre-form threads for screws that attach the batten bar to the beam, since a 1/4" bolt thread pattern requires tolerances in excess of what can be extruded in aluminum. Instead this slot is sized for a thread rolling fastener that can be removed and installed multiple times in the same slot. The batten bar is designed as a leaf spring to compress the low memory set silicone gasket between the panel and the batten bar. The panel edge bend is designed such that when the batten is tightened, the panel is pushed into the gasket. This is the only batten system with three redundant features to ensure a leak free design. The batten legs are also designed to prevent twisting when personnel access the dome roof.



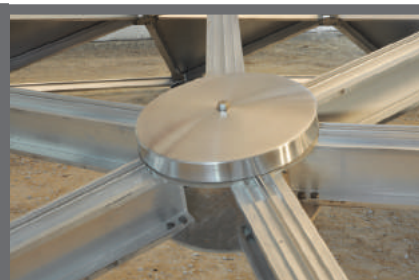
**Fig. 3: Competitor Detail**

The attempt to form threads in the beam at the extrusion mill is not practical due to normal extrusion process tolerance. A screw will strip out the threads in the slot after one or two installations and will not develop maximum strength. No flange stiffeners are allowed due to manufacturing limitations. The gasket compression is the sole device for sealing the joint.

## Node Designs



Node detail utilizes proprietary extrusion design.



AluminumDomes.com - Spun aluminum gusset cover provides precision seal.



Competitor Design - Pressed cover provides inconsistent seal.



Petroleum



Tarsco Panama Project

At AluminumDomes.com, we design, manufacture and install aluminum domes for the following applications:

- ⊗ Water and wastewater
- ⊗ Dry bulk storage containment
- ⊗ Petroleum
- ⊗ Architectural applications

Unlike other dome manufacturers that use subcontracted labor for field installation, TC domes are installed utilizing direct factory crews. Complete turnkey design, supply and field installation by one company!



Secondary Containment



Powder Coated Aluminum Design



Potable Water



Tank Connection offers unlimited sizes ranging from 12' up to 1,000' diameter (3.5 m up to 304.8 m). We offer:

- ⊗ The premier dome design
- ⊗ Unmatched dome quality
- ⊗ Competitive pricing
- ⊗ The best warranty on materials and installation



Unmatched Safety Design - Center safety line support uses a hoist ring designed for 5000 lb. lateral load.



Process Water



Tank Connection, LLC

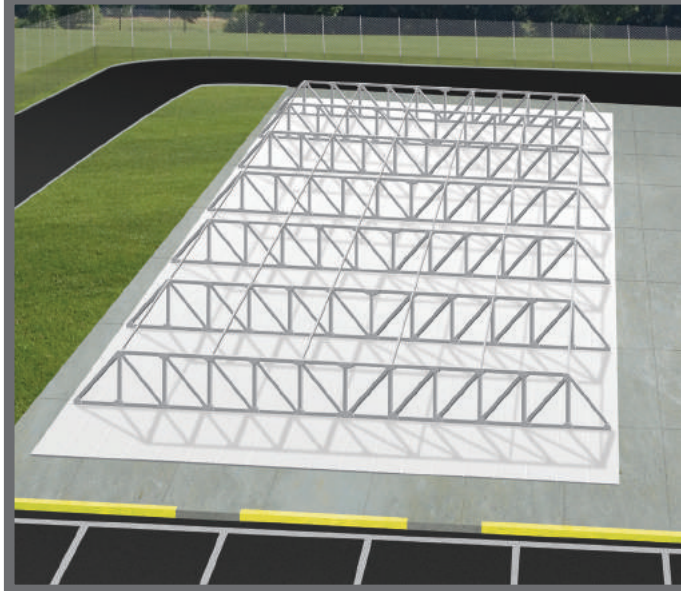
3609 North 16th Street • Parsons, KS 67357 • Phone: +1 620.423.3010 • Fax: +1 620.423.3999 • www.tankconnection.com

# FLAT COVERS & LOW PROFILE CONTAINMENT COVERS

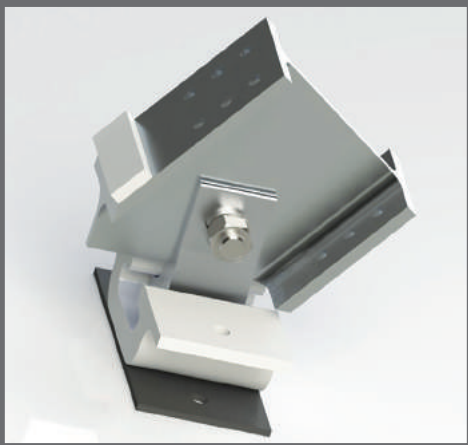
At Tank Connection, our flat and low profile aluminum containment covers are available in unlimited sizes for wastewater treatment applications. We offer:

- ⊗ Flat cover roof system with external truss supports
- ⊗ Low profile containment covers with internal supports
- ⊗ Clear span low profile aluminum domes
- ⊗ Retrofit aluminum domes and flat covers for concrete and field-welded tanks
- ⊗ All aluminum construction that is corrosion resistant and virtually maintenance free

### Flat Cover Truss Supported Design



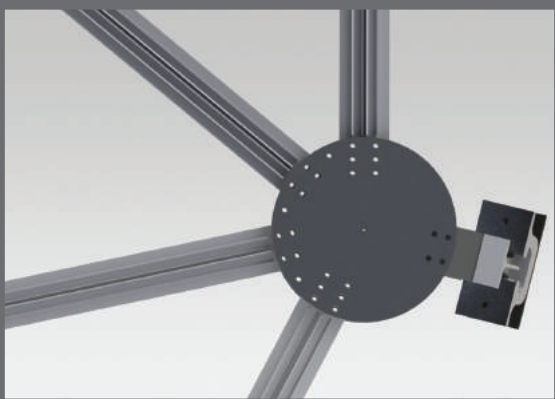
### TC Shoe Detail



### Low Profile Containment Covers



### Pier Assembly To Struts



*At Tank Connection, we offer the BEST Aluminum Dome Design offered today for industrial, municipal and petroleum applications. Review our design details and compare to competitor designs.*

Tank Connection, LLC

3609 North 16th Street • Parsons, KS 67357 • Phone: +1 620.423.3010 • Fax: +1 620.423.3999 • [www.tankconnection.com](http://www.tankconnection.com)

# ALUMINUM DOME

Looking for Bolted Steel Tanks for Water Storage? The "Big 5" defines the market leader and they all point to ONE COMPANY... Tank Connection!



## DESIGN

Our bolted RTP (rolled, tapered panel) tank design is unmatched worldwide. It is the strongest, precision tank design that does not utilize cheap web stiffeners.



## COATINGS

Our LIQ Fusion 7000 FBE™ coating system and application technology is unmatched in water storage applications. It is a *STRONGER SYSTEM THAN GLASS COATINGS* and other epoxy powder systems. It is provided exclusively by one company, Tank Connection.



## PRODUCT QUALITY

Our facilities are ISO 9001 quality system certified. TC operates multiple storage tank manufacturing facilities in the U.S. Our storage products and services are requested globally because our quality is recognized as "the BEST" in the industry!



## FIELD CONSTRUCTION PROCESSES

Tank Connection field construction services are #1 in the bolted tank industry. TC offers both factory direct non-union and union field installation services. Our construction processes are unmatched in the industry for quality control and field safety. EMR.59



## INDUSTRY LEADERS IN STORAGE

We are the leading experts in storage applications with more years of combined industry experience than any other tank company.

Visit us at the #1 web domain address for aluminum domes worldwide, [www.AluminumDomes.com](http://www.AluminumDomes.com). Dome specifications can be downloaded within a few minutes. Quotations on new dome inquiries are typically processed within a few hours.



Visit our websites or our social media pages.

