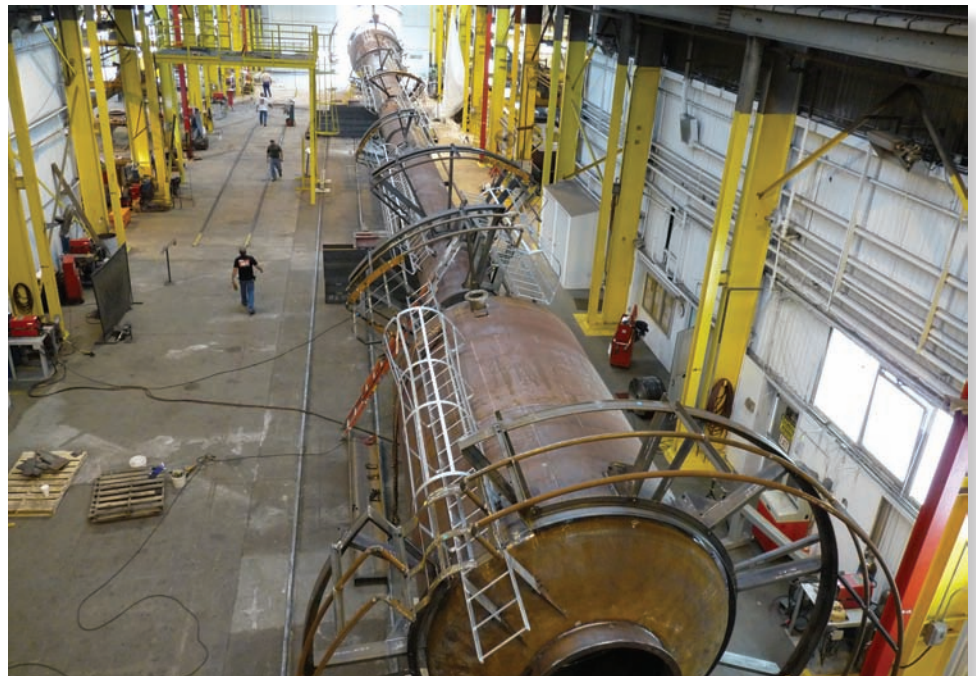


**“OFF THE CHARTS”** IN SHOP FABRICATION!



***atec steel***  
FABRICATION & CONSTRUCTION

Shop Built Tanks  
ASME Pressure Vessels  
Heavy Steel Construction  
Fractionation Towers  
Bag Filters  
Flare Stack & Tips  
HRSG Stacks & Breeching  
Structural Steel  
Process Piping  
Modular Skids  
Specialty / Custom Steel



**ATEC STEEL**

In heavy steel, specialty steel, tank fabrication and pressure vessels, our shop fabrication sets a new benchmark of performance in the industry!

## Certifications

ASME "S" Code Stamp

ASME "U" Code Stamp

ASME "9P" Code Stamp

NBIC "R" Code Stamp



ATEC is #1 in Heavy Steel & Specialty Steel Construction. We are continuously told by our clients that we have the premier fabrication facility in North America. Don't take our word for it. Talk with our clients or visit our facility and conduct your own review.

ATEC Steel's fabrication facility is state-of-the-art. Review our codes and shop fabrication procedures and you find the best in specialty steel fabrication. The projects others can't build are what we fabricate everyday.



ATEC utilizes the latest state-of-the-art equipment for burning, cutting, squaring, beveling, bending and rolling of both carbon steel and stainless steel materials. Our in-house quality assurance program satisfies the requirements of national codes and standards allowing ATEC Steel to maintain our code stamp certifications.



## Products & Services:

- Shop Built Tanks
- ASME Pressure Vessels
- Fractionation Towers
- Bag Filters
- Flare Stack and Tips
- HRSG Stacks and Breeching
- Structural Steel
- Process Piping
- Modular Skids
- Specialty / Custom Steel Fabrication



## Fabrication Facility, Capabilities and Equipment:

- 160,000 square feet of manufacturing
- (9) Bays ranging from 50' x 300', 40' x 300' and 40' x 160' - all equipped with electric gantry cranes

## Material Size and Weight limits:

- 28 ga to 3" plate thickness
- 10' width - 40' length - 50 ton weight



## Crane Service:

- (2) 10 ton gantry cranes - 30' height under hook
- (1) 70 ton gantry crane - 25' height under hook
- (2) 25 ton cranes - 25' height under hook
- (17) 5, 3 and 2 ton cranes

## Crane Service:

- (2) Burn Tables - 12' x 92' with high definition capacity of over 2"
- (3) Sets of Plate Rolls with capacities up to 2 1/4"
- DAVI Angle Rolls
- Accu Brake - 320 ton
- 3/8" Plate Shear
- Saw 20" depth x 30" width
- CNC Whitney (for heavy plate)
- CNC Strip-It (for thin gauge)
- (30) 350 amp Welding Machines
- Multiple Welding Positioners
- Multiple Sets of Turning Rolls
- Environmentally Controlled Blasting and Coating - 40' x 200'



Shipped by truck, rail, barge or ship. ATEC fulfills orders with on time deliveries.



**All roads lead to ATEC!**

Check us out at:

[www.ATECSteel.com](http://www.ATECSteel.com)

[www.ATECTank.com](http://www.ATECTank.com)

[www.API620Tank.com](http://www.API620Tank.com)

[www.API650Tank.com](http://www.API650Tank.com)

[www.FieldWeldTanks.com](http://www.FieldWeldTanks.com)



**ATEC Steel - Corporate Headquarters**

1000 West 5th Street

Baxter Springs, KS 66713

Phone: 877-457-5352

