

The REAL FACTS on Today's Bolted Water Storage Tanks & High Performance Coating Systems!

Don't be fooled or misled by tank manufacturers that communicate their story of FICTION as FACTS. Today's LIQ Fusion 7000 FBE™ coating system by Tank Connection is a stronger system than today's glass/vitreous enamel coatings for liquid storage applications, and we can prove it.

The REAL FACTS in lieu of FICTION:

REAL FACTS 1

Tank Connection is the fastest growing storage tank manufacturer in North America. There just might be a reason why.

Over the last decade, Tank Connection has grown to over 300 employees with more combined years of experience in storage tank design, fabrication, coating applications and field installation than any bolted tank company in North America. Their focus is simple: Best Design, Best Coating Systems, Best Quality, Best Construction Process & Best Support Team.

Real simple.....REAL Facts!



REAL FACTS 2

Tank Connection is the only tank manufacturer worldwide that offers all types of steel storage systems including bolted RTP (rolled, tapered panel), field-weld, shop-weld, SIT's, hybrid tank construction and aluminum dome covers. When a supplier is not limited in the products and services they offer, their review of client applications and specifications can be objective.

Tank Connection designs, manufactures and installs the top-rated storage products and services in the industry, complemented always with "golden rule" customer service. They set the standard of integrity as industry leaders in storage.

REAL FACTS 3

Google “fusion bonded epoxy powder coating” and review over 4 million listings online. The real facts are that today’s coating technology advancements are ALL in powder coating technology, which is why some glass tank manufacturers now offer, promote and recommend their “epoxy powder” systems over their glass/vitreous enamel coatings.

Fusion bonded epoxy coating, also known as fusion-bond epoxy powder coating and commonly referred to as FBE coating, is an epoxy-based powder coating that is widely used to protect steel pipe used in pipeline construction, concrete reinforcing bars (rebar) and on a wide variety of piping connections, valves etc. from corrosion. FBE coatings are thermoset polymer coatings. They come under the category of protective coatings in paints and coating nomenclature. The name fusion-bond epoxy is due to resin cross-linking and the application method, which is different from a conventional paint. The resin and hardener components in the dry powder FBE stock remain unreacted at normal storage conditions. At typical coating application temperatures, usually in the range of 180 to 250 °C (356 to 482 °F), the contents of the powder melt and transform to a liquid form. The liquid FBE film wets and flows onto the steel surface on which it is applied, and soon becomes a solid coating by chemical cross-linking, assisted by heat. This process is known as “fusion bonding”. The chemical cross-linking reaction taking place in this case is irreversible. Once the curing takes place, the coating cannot be returned to its original form by any means. Application of further heating will not “melt” the coating and thus it is known as a “thermoset” coating.

Excerpt from Wikipedia

REAL FACTS 4

Tanks coated with glass/vitreous enamel can’t be recoated in the future. This storage tank product has a finite service life and then requires replacement. Just like today’s household appliances, a storage tank that can’t be recoated in the future will eventually become a disposable product. Don’t be fooled by a glass tank supplier claim that their tanks never require recoating. The real facts remain, this product can never be recoated, only patched or replaced.



Glass coated interior spalling



Glass coated with surface defects
10 years old



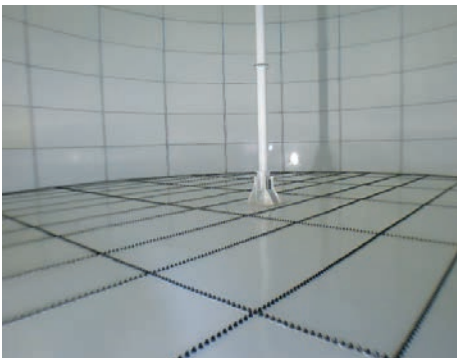
Glass coated with patches
22 years old

REAL FACTS 5

There is only ONE manufacturer of bolted glass/vitreous enamel tanks in the U.S. All other glass bolted panels are fabricated in foreign countries and shipped to the U.S. under various trade names.

REAL FACTS 6

With powder coatings technology leading the future in bolted steel water tank construction, only ONE company offers the top performance powder coating system available. Developed by Akzo Nobel, the World Leader in powder coatings, LIQ Fusion 7000 FBE™ is the #1, “best of the best” powder coating system available for water storage applications. Tank Connection is the exclusive provider of this coating system and maintains the only powder coat line “certified” to apply this coating system.

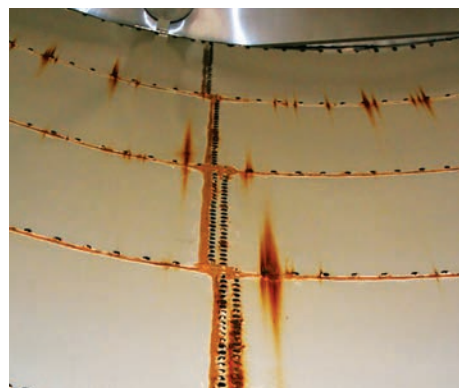


REAL FACTS 7

The benchmark of quality for edge protection on bolted steel panels is set by “powder coating” technologies, which wrap around the panel edges. Edge protection is a major deficiency of bolted glass panel tanks, which is why mastic sealant is pulled over the panel edges during field construction.



LIQ Fusion 7000 FBE™ – Powder coating strength, superior edge and bolt hole protection



Glass tank deficiency – Poor panel edge and bolt hole protection

REAL FACTS 8

Bolted tank construction utilizes numerous bolt holes in panel connections. Powder coating technology is superior in wrapping around and through panel bolt holes, a major deficiency in glass/vitreous enamel coatings.

REAL FACTS 9

The best bolted RTP (rolled, tapered panel) water tank designs DO NOT utilize webbies. Webbies, also know as web supports or web stiffeners, are cheap reinforcement bands. Other versions of horizontal and vertical stiffeners are used on corrugated grain tanks. The question becomes: Does your application require steel tank plate thickness or an erector's set of stiffeners and lighter gauge steel? As a standard, TC offers heavier plate thickness without webbies, just like premier field-welded tank construction.

REAL SIMPLE.....REAL FACTS.....BEST DESIGN & BEST PRODUCTS!



130 ft (39.624 m) diameter - The project design consisted of no webbies, which is the same as field-weld tank construction.



Less than 35 ft (10.668 m) diameter with 4 rows of webbies by "other brand". How many web stiffeners are acceptable for your application?

REAL FACTS 10

Tank Connection's bolted RTP (rolled, tapered panel) construction coated with LIQ Fusion 7000 FBE™ commands the highest quality in the industry and maintains the lowest life cycle cost in storage applications. Glass coated tanks maintain the highest life cycle cost in steel tank construction.



This is a picture of a 20 year old blue glass tank that we dismantled and replaced with a new TC tank. This tank was failing and dangerously close to "zipping apart" which is pretty unbelievable. The top 2 rings of the TC Tank had heavier steel than the blue glass bottom ring! This customer was incredibly happy with the Tank Connection replacement.

... FSRC Tanks, Inc.

For more information on bolted storage tanks and today's high performance powder coating systems compared to glass/vitreous enamel coatings, review a "side by side" comparison of these products REAL Facts in TC's Brochure, "LiQ Fusion 7000 FBE™, A Stronger System than Glass".

When you need real facts and answers to your questions on liquid storage applications, please call or email us. We will always provide you with an objective review of your application and recommend the BEST storage products and services available.

At Tank Connection, we design and fabricate big and small tanks, but we don't build disposable tanks. The BEST in Liquid Storage is offered by one company, Tank Connection!

TANK CONNECTION
AFFILIATE GROUP

GET CONNECTED

LIQ Fusion 7000 FBE™
... A Stronger System Than Glass!

LIQ Fusion 7000 FBE™ technology is here! In bolted storage tanks, Tank Connection offers the next generation of unmatched coating performance.

LIQ Fusion 7000 FBE™ is designed as the replacement for glass/porcelain enamel coatings.

Simply the Facts!

GET CONNECTED with the Industry Leader in Storage and expect real performance on your next project!

Tank Connection, LLC

3609 North 16th St • Parsons, KS 67357

Phone: +1 620.423.3010 • Fax: +1 620.423.3999

www.tankconnection.com

